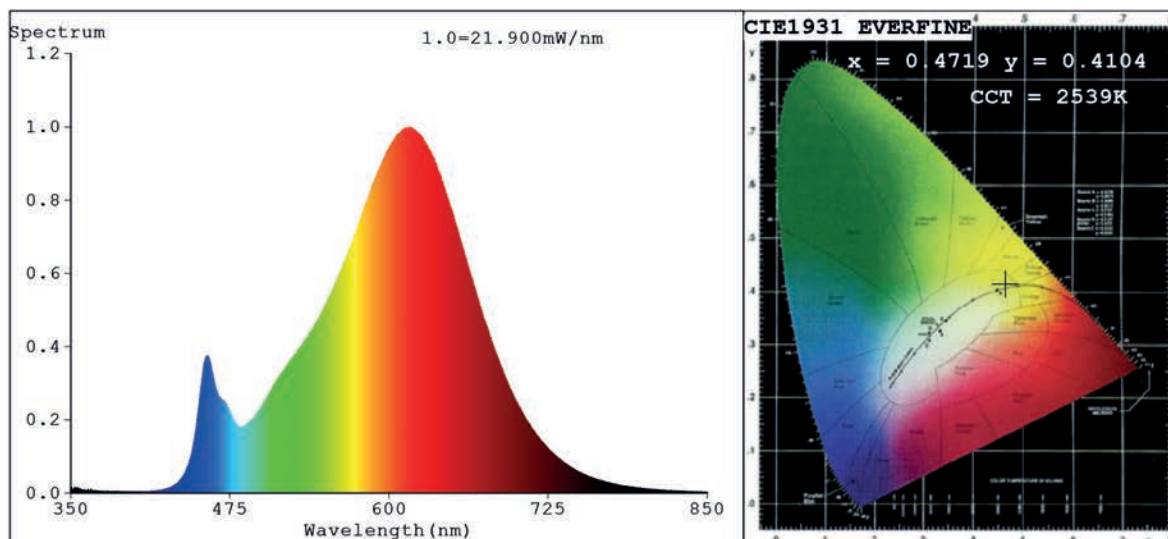


Spectrum Test Report



Color Parameters:

Chromaticity Coordinate: $x=0.4719$ $y=0.4104$ $u'=0.2704$ $v'=0.5291$
 CCT=2539K (Duv=-0.0009) Dominant WL:Ld =585.3nm Purity=64.8%
 Ratio:R=27.1% G=70.6% B=2.3%; Peak WL:Lp=615.8nm FWHM=124.4nm
 Render Index:Ra=86.1 CRI=82.5 TM30:Rf=84 Rg=96
 R1 =86 R2 =95 R3 =95 R4 =83 R5 =86 R6 =95 R7 =84
 R8 =66 R9 =30 R10=89 R11=82 R12=79 R13=88 R14=98 R15=80

Photo Parameters:

Flux = 964.2 lm Eff. : 96.39 lm/W Fe = 3.248 W

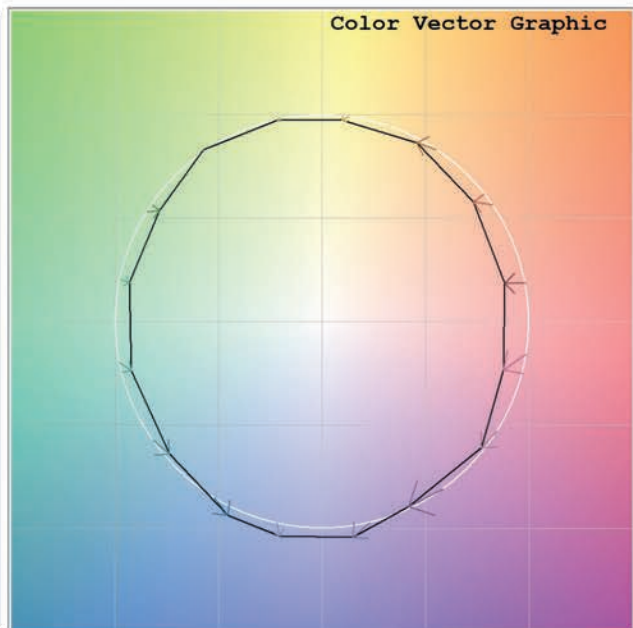
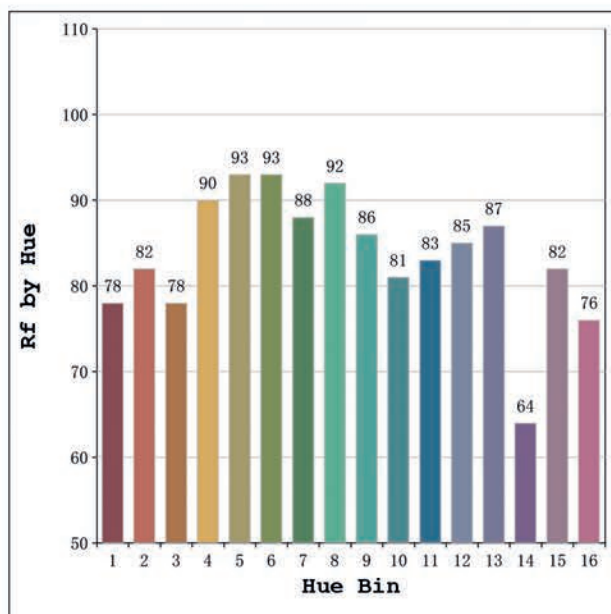
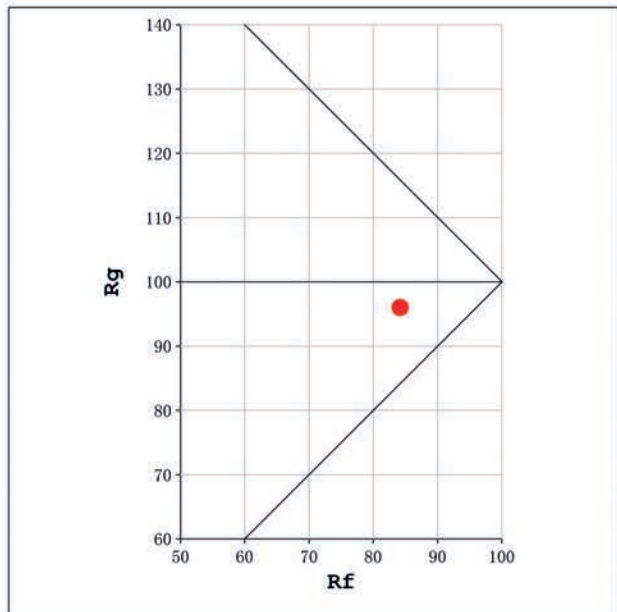
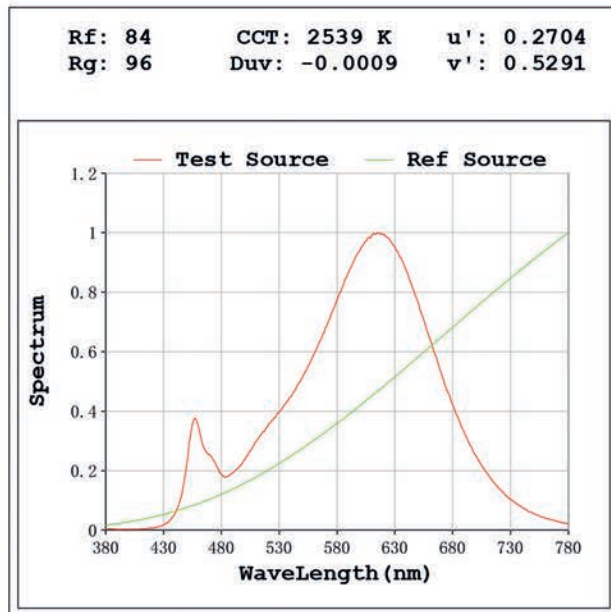
Electrical parameters:

V = 23.998 V I = 0.4168 A P = 10.00 W PF = 1.000

Status: Integral T = 1108 ms Ip = 46230 (71%)

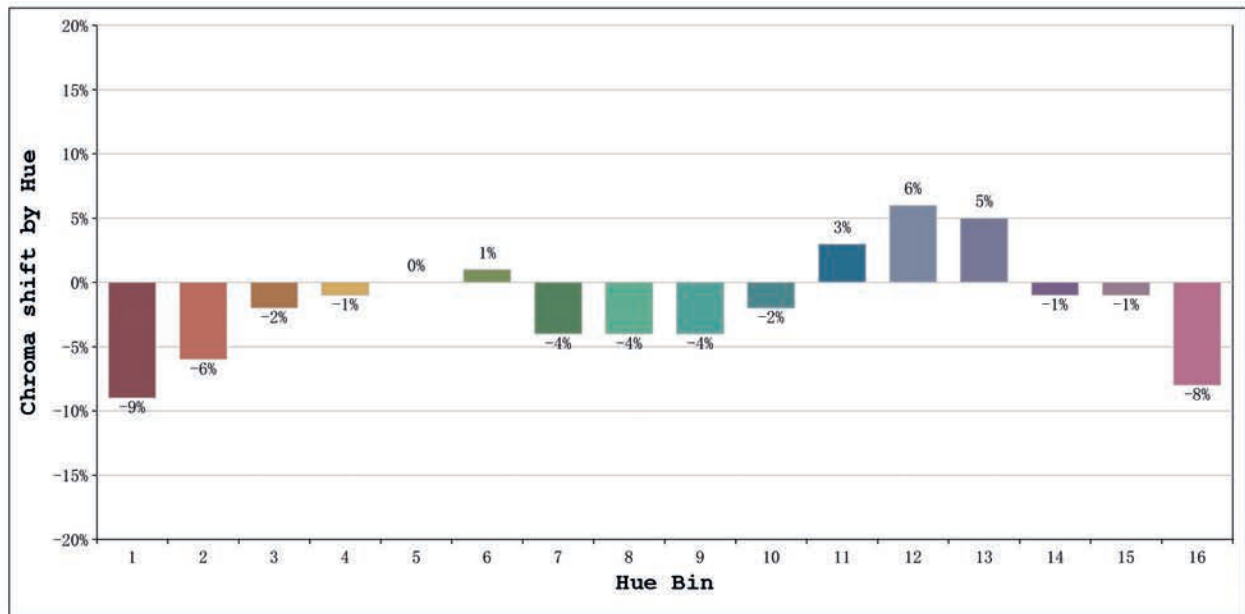
Model: Ávila free cut 2500K
 Tester: Sergio Carneros
 Temperature: 25Deg
 Manufacturer: Luz Negra S.L

Number: 33.333
 Date: 2025-09-01 11:20:22
 Humidity: 51%
 Remarks: 100cm de tira flexible



Model: Ávila free cut 2500K
 Tester: Sergio Carneros
 Temperature: 25Deg
 Manufacturer: Luz Negra S.L

Number: 33.333
 Date: 2025-09-01 11:20:22
 Humidity: 51%
 Remarks: 100cm de tira flexible



			Graphic shift(%)	
Hue Bin	Hue Angle	Rf	Chroma	Hue
1	0.0° - 22.5°	78	-9	2
2	22.5° - 45.0°	82	-6	6
3	45.0° - 67.5°	78	-2	9
4	67.5° - 90.0°	90	-1	3
5	90.0° - 112.5°	93	0	2
6	112.5° - 135.0°	93	1	0
7	135.0° - 157.5°	88	-4	-3
8	157.5° - 180.0°	92	-4	0
9	180.0° - 202.5°	86	-4	5
10	202.5° - 225.0°	81	-2	10
11	225.0° - 247.5°	83	3	10
12	247.5° - 270.0°	85	6	3
13	270.0° - 292.5°	87	5	-8
14	292.5° - 315.0°	64	-1	-17
15	315.0° - 337.5°	82	-1	-10
16	337.5° - 360.0°	76	-8	-9

Model: Ávila free cut 2500K
 Tester: Sergio Carneros
 Temperature: 25Deg
 Manufacturer: Luz Negra S.L

Number: 33.333
 Date: 2025-09-01 11:20:22
 Humidity: 51%
 Remarks: 100cm de tira flexible